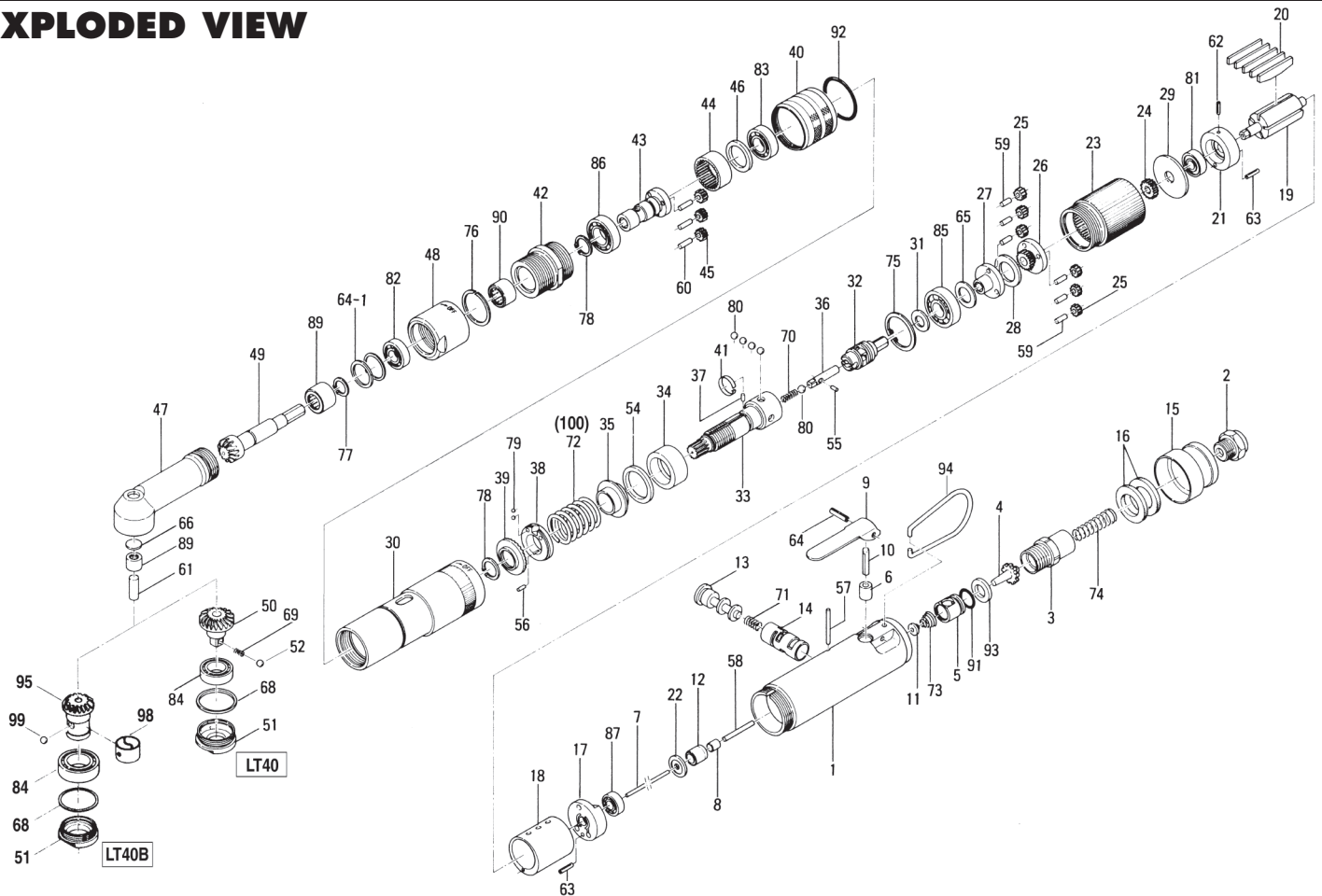


# US-LT40-03C[P] ANGLE SCREWDRIVER

## EXPLODED VIEW



## PARTS LIST — FOR REFERENCE ONLY

Index Number	Part Number	Description	Qty.	Index Number	Part Number	Description	Qty.	Index Number	Part Number	Description	Qty.
1	461-025-6	Casing	1	35	472-379-8	Retainer	1	69	976-346-0	Spring (2.9 x 6.35) (0.45)	1
2	480-091-8	Air Inlet Bushing	1	36	471-318-5	Pilot Pin	1	70	976-058-0	Spring (4.5 x 11)	1
3	461-097-6	Air Inlet Bushing Connector	1	37	471-764-7	Notch Pin	1	71	976-147-0	Spring (7 x 12)	1
4	259-100-0	Valve	1	38	472-562-8	Spring Holder	1	72	976-516-0	Spring (Standard-Red)	1
5	461-102-6	Valve Bushing	1	39	472-257-8	Regulating Screw	1	73	977-071-0	Cone Spring (5.5 x 11 .5 x 15)	1
6	553-103-1	Valve Rod Bushing	1	40	472-370-7	Clutch Casing Sleeve	1	74	977-155-0	Cone Spring (7 x 10 x 35)	1
7	463-104-7	Valve Rod	1	41	471-670-7	Band	1	75	979-326-0	Inner Snap Ring (IRTW-26)	1
8	444-106-8	Valve Rod Cap	1	42	461-082-8	Connecting Screw	1	76	979-190-0	Outer Snap Ring (22)	1
9	700-107-1	Valve Lever	1	43	462-319-9	Anvil	1	77	979-351-0	Inner Snap Ring (ISTW-10)	1
10	461-114-6	Valve Pin	1	44	462-466-9	Second Internal Gear	1	78	979-353-0	Inner Snap Ring (ISTW-12)	2
11	259-254-0	Shot-Off Valve	1	45	462-471-9	Second Planet Gear	3	79	981-001-0	Ball (3/32)	2
12	461-567-6	Bushing	1	46	462-487-9	Second Gear Cage Spacer	1	80	981-004-0	Ball (3/16)	5
13	893-057-1	Reverse Valve	1	47	461-441-8	Angle Casing	1	81	982-063-0	Ball Bearing (606ZZ)	1
14	472-211-7	Reverse Valve Bushing	1	48	469-081-6	Locking Nut	1	82	982-035-0	Ball Bearing (698)	1
15	472-782-7	Exhaust Deflector	1	49	461-420-7	Driving Gear	1	83	982-100-0	Ball Bearing (6000)	1
16	161-835-4	Filter	2	50	461-430-8	Driven Gear (P)	1	84	982-870-0	Ball Bearing (6801)	1
17	472-285-7	Rear Plate	1	51	461-488-7	Angle Head Casing Cover	1	85	982-901-0	Ball Bearing (6900)	1
18	472-286-7	Cylinder	1	52	981-002-0	Ball (1/8)	1	86	982-902-0	Ball Bearing (6901)	1
19	472-287-7	Rotor	1	54	944-019-0	Back-up Ring (P19)	1	87	982-039-0	Miniature Ball Bearing (R1560ZZ)	1
20	472-288-0	Rotor Blade (PC)	5	55	969-470-0	Pin (E) (2 x 8)	1	88	988-008-0	Needle Roller Bearing (NK 10/12)	1
21	472-289-7	Front Plate	1	56	970-092-0	Pin (H) (2 x 5.5)	1	89	988-380-0	Needle Roller Bearing (F68)	1
22	461-291-6	Rear Plate Spacer	1	57	970-105-0	Pin (H) (2 x 24)	1	90	988-394-0	Needle Roller Bearing (FJ-1210)	1
23	472-029-7	Gear Casing	1	58	970-108-0	Pin (H) (2 x 26.8A)	1	91	990-911-0	O-Ring (SNS-12)	1
24	472-460-5	Rotor Gear	1	59	972-089-0	Roller Pin (3 x 8)	6	92	990-923-0	O-Ring (SNS-26)	1
25	472-470-5	Planet Gear	6	60	972-090-0	Roller Pin (3 x 10)	3	93	996-424-0	Packing (16 x 9 x 2)	1
26	472-480-5	First Gear Cage	1	61	972-216-0	Roller Pin (6 x 16)	1	94	010-790-1	Suspension Ring	1
27	472-485-5	Second Gear Cage	1	62	973-006-0	Roll Pin (2 x 6)	1	95	461-430-3	Driving Gear	1
28	496-483-1	Gear Cage Spacer	1	63	973-010-0	Roll Pin (2 x 10)	2	98	430-356-1	Bit Band	1
29	472-807-7	Spacer	1	64	973-118-0	Roll Pin (3 x 18)	1	99	981-002-0	Ball (1/8)	1
30	461-369-7	Clutch Casing	1	64-1	975-113-0	Spacer (19 x 15 x 1.5)	1				
31	461-344-6	Cam Retainer	1	65	975-106-0	Spacer (18.5 x 11 x 1)	1				
32	472-346-5	Cam	1	66	975-593-0	Round Plate (10 x 1)	1				
33	461-654-7	Cam Guide	1	67	975-768-0	Adjusting Spacer (19 x 16.2 x T)	1				
34	472-375-7	Cam Ring	1	68	975-787-0	Adjusting Spacer (26 x 24 x T)	1				

### ACCESSORIES

100	976-517-0	Spring (Weak: Yellow)	1
101	939-402-0	Screwdriver	1

### FOOTNOTES

AIMCO also offers a complete line of standard & special adapters, bits, sockets and extensions.



10000 SE PINE STREET  
PORTLAND, OR 97216  
503-254-6600  
FAX 503-255-2615

When ordering spare parts, please specify tool type, part number and description.